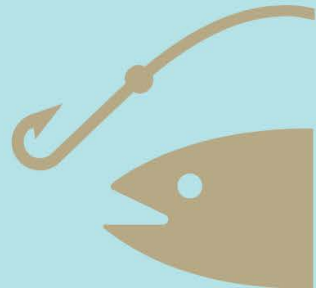
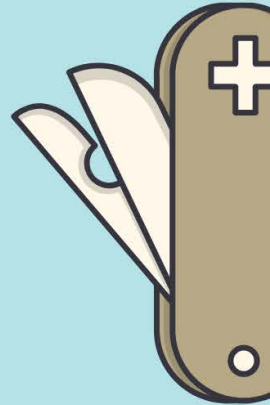
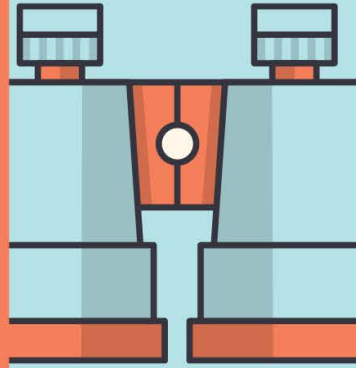
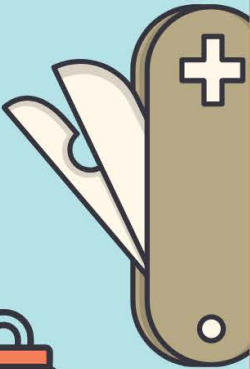
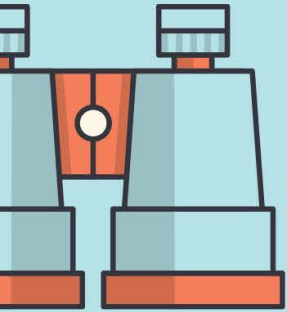


CUB SCOUTS ARE
GOING TO THE BEACH!



OCTOBER 15 - 17, 2021
SEA RIM
19335 S. GULFWAY DRIVE
SABINE PASS, TX 77655





THING TO DO

At this park, you can camp, go birding, beach combing, fish, and walk. Stroll along the Gambusia Nature Trail Boardwalk, which takes you through the marsh.

BOO!

Skits & Costume Contest Saturday Night

ALLIGATOR SAFETY

When you visit the park, you are a guest in this wild habitat. Treat all wildlife with respect. Feeding, harassing, injuring or removing wildlife, including alligators, is against the law. Retreat: Keep 30 feet away from alligators at all times. If you get too close, back away slowly. Do not assume that alligators are slow and sluggish. They are extremely quick and agile and will defend themselves when cornered. They rarely chase people, but they can outrun or out swim the fastest person for the first 30 feet.

Hiss: If an alligator hisses, it's warning you that you are too close. Back away slowly.

DIRECTIONS

The park is located 20 miles south of Port Arthur on State Highway 87. The park is 10 miles west of Sabine Pass.

Note: State Highway 87 is closed between Sea Rim and High Island.

Park Address:

19335 S. Gulfway Drive
Sabine Pass, TX 77655

The Park HQ is located at:

Latitude: 29.675539

Longitude: -94.043525



Sea Rim State Park



TexasStateParks.org/App



TexasStateParks.org/SocialMedia

#TexasStateParks #BetterOutside

PLEASE NOTE

- CHECK OUT time is 12 p.m. or renew permit by 9 a.m. (pending site availability).
- Public consumption or display of any alcoholic beverage is prohibited.
- A maximum of eight people permitted per campsite. Guests must leave the park by 10 p.m. Quiet time is from 10 p.m. – 6 a.m.
- GRAY WATER AND BLACK WATER MUST BE DISCHARGED ONLY AT DUMP STATIONS.
- Pets must be kept on leash. Please pick up after them.
- Valid permit required on windshield of each vehicle in park. All vehicles to remain on pavement except in East and West Beach Camping Areas. Parking on the dunes and grass is prohibited.

- Swim in the Gulf at your own risk. NO LIFEGUARD on duty.
- No glass containers allowed in beach area.
- Always swim with a friend. Children must be supervised by an adult who can swim.
- CAUTION: POSSIBLE UNDERCURRENTS
- Jellyfish advisory; jellyfish are found in warm waters – see park headquarters for further information or first aid for stings.

VOLUNTEER GROUP

Sea Rim State Park offers a variety of short-term and ongoing volunteer activities that assist in preserving Texas' cultural and natural resources. For information, contact the park office at (409) 971-2559.

ALLIGATOR ETIQUETTE

- ABSOLUTELY DO NOT feed or annoy the alligators.
- Keep pets on a leash. Do not throw objects in water for your dog to retrieve.
- Keep at least 90 feet from an alligator – do not assume they're slow-moving.
- Swimming allowed only in Gulf of Mexico.
- Do not fish or crab when alligators are present.
- If an alligator goes after a fish you have caught, cut the line and let the alligator have the fish.
- Stay clear of grasses, twigs and/or soil near the side of a trail. It may be a nest and the mother alligator is probably close by guarding it.
- If an alligator opens its mouth and hisses, you have come too close. Retreat slowly; make no quick moves. Keep your eyes on the alligator.
- Above all, NEVER get close enough to threaten an alligator.



LEGEND

- ★ Headquarters
- \$ Fee Booth
- Restrooms
- Rinse Showers
- Potable Water
- Primitive Tent Sites
- Water and Electric Sites
- Cabin
- Dump Station
- Day Use/Picnic Area
- Swimming
- Fishing
- Parking
- Boat Ramp
- Canoe/Kayak Launch
- Handicapped Accessible
- Residence
- Maintenance



19335 South Highway 87
P.O. Box 356
Sabine Pass, TX 77655
(409) 971-2559



TPWD receives funds from the USFWS. TPWD prohibits discrimination on the basis of race, color, religion, national origin, disability, age, and gender, pursuant to state and federal law. To request an accommodation or obtain information in an alternative format, please contact TPWD on a Text Telephone (TTY) at (512) 389-8915 or by Relay Texas at 7-1-1 or (800) 735-2889 or by email at accessibility@tpwd.texas.gov. If you believe you have been discriminated against by TPWD, please contact TPWD, 4200 Smith School Road, Austin, TX 78744, or the U.S. Fish and Wildlife Service, Office for Diversity and Workforce Management, 5275 Leesburg Pike, Falls Church, VA 22041.

© 2021 TPWD PWD MP P4504-055A (2/21)

Texas State Parks is a division of the Texas Parks and Wildlife Department.

PARK RESERVATIONS

TexasStateParks.org ParquesDeTexas.org
(512) 389-8900



Proud Sponsor of Texas State Parks



1213 Camping Checklist



Shelter and Equipment

- Tent with fly sheet, poles, stakes
- Tarp
- Rope
- Sleeping pad, mats, air mattress, air pump
- Blanket, comforter, or sleeping bag
- Pillows
- Flashlights
- Reusable Bottle for water
- Day pack
- Scout Book

- Bar of soap
- Shampoo, conditioner

Cooking and dining

- Cooler
- Paper plates and bowls, plastic ware
- Folding chairs and table
- Trash bags
- Camp stove /Dutch oven

Clothing and laundry

- Class B T-shirts
- Costume Optional
- Shorts, pants
- Boots, shoes, flip-flops
- Socks
- Hat, cap
- Swimsuit
- Towels

First aid & hygiene

- Medication, prescriptions
- Bandages, tape, gauze, elastic wraps
- Aspirin, ibuprofen, acetaminophen
- Antibiotic wipes, hydrogen peroxide, cotton balls
- Antiseptic cream
- Sunscreen, sunburn lotion or ointment
- Bug spray
- Toilet paper